

REVEAL[®] 3-D FOR HAZELNUT

PLEASE READ KIT INSTRUCTIONS COMPLETELY BEFORE PERFORMING TEST.



Materials provided:

- 10 blue test devices
- 10 sample tubes and caps
- 10 sachets of Type 11 extraction buffer
- 10 sterile swabs
- 1 bottle swab wetting solution

Materials required but not provided (for food extraction only):

- 8504 3-D Food Buffer
- 9381 50 mL graduated tubes

Product number: 902087E

Rinse/Food: 5–10 ppm hazelnut

Swab: 10 µg/100 cm² hazelnut

Testing time: 5 minutes

Call 800.234.5333 to order or visit NEOGEN.com

Rinse Sampling



1 Open Type 11 extraction buffer sachet and add to a sample tube.



2 Add 0.25 mL of sample to the sample tube.

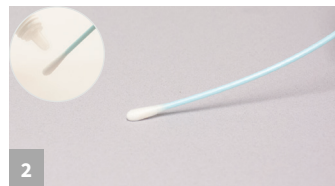


3 Secure cap and shake for 1 minute. Proceed to Rinse/Swab Testing step #1.

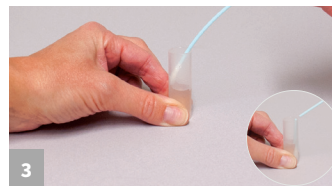
Swab Sampling



1 Open Type 11 extraction buffer sachet and add to a sample tube.



2 Gather the sample. For dry surfaces moisten with swab wetting solution. Do not premoisten for wet surfaces.



3 Return the swab to the extraction buffer and break off into the tube.



4 Secure cap and shake for 1 minute. Proceed to Rinse/Swab Testing Step #1

Rinse/Swab Testing



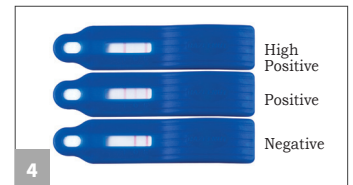
1 Remove the lid and fill with liquid from the tube.



2 Dip the Reveal 3-D device into the liquid within the lid, ensuring the liquid saturates the cavity.



3 When the liquid is seen running up the test window, place the device on a flat surface. Allow the test to develop for 5 minutes.



4 Interpret the results.

Food Sample Extraction & Testing



1 Add 20 mL of Reveal 3-D Food Buffer into 50 mL tube (18 mL for liquid samples).



2 Add 2 g (2 mL for liquid samples) of sample to tube



3 Secure cap and shake for 1 minute.



4 With the tube tilted at approximately a 45 degree angle, dip the device into the tube; ensure that the cavity is saturated with the liquid. Move to steps 3–4 of previous section.

